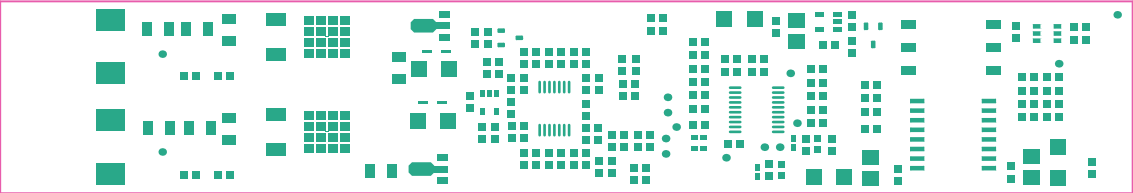
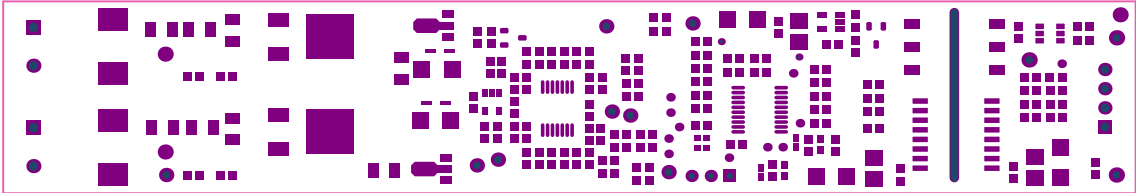


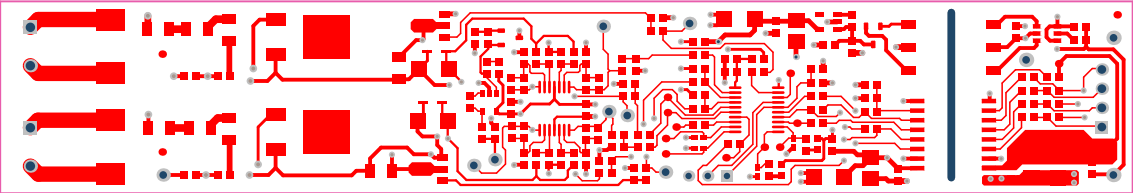
ALL ARTWORK VIEWED FROM TOP SIDE	BOARD #: TIDA-00847_AC_DC	REV: E1	SUN REV: Not In VersionControl
LAYER NAME = Top Overlay	TID #: TIDA-00847_AC_DC		
PLOT NAME = Top Overlay	GENERATED : 3/3/2017 12:57:21 PM	TEXAS INSTRUMENTS	



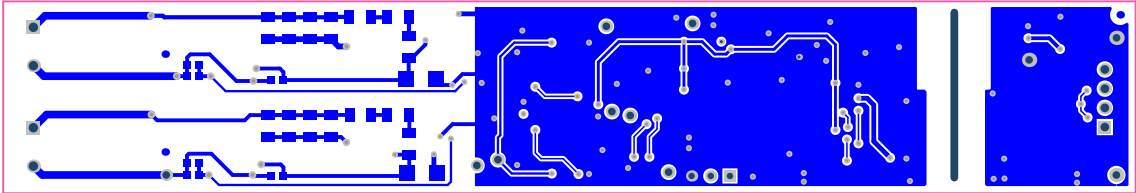
ALL ARTWORK VIEWED FROM TOP SIDE	BOARD #: TIDA-00847_AC_DC	REV: E1	SUN REV: Not In VersionControl
LAYER NAME = Top Paste	TID #: TIDA-00847_AC_DC		
PLOT NAME = Top paste	GENERATED : 3/3/2017 12:57:21 PM	TEXAS INSTRUMENTS	



ALL ARTWORK VIEWED FROM TOP SIDE	BOARD #: TIDA-00847_AC_DC	REV: E1	SUN REV: Not In VersionControl
LAYER NAME = Top Solder	TID #: TIDA-00847_AC_DC		
PLOT NAME = Top Solder Mask	GENERATED : 3/3/2017 12:57:22 PM	TEXAS INSTRUMENTS	



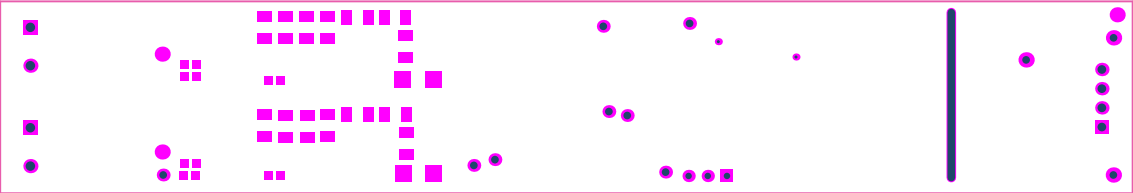
ALL ARTWORK VIEWED FROM TOP SIDE	BOARD #: TIDA-00847_AC_DC	REV: E1	SUN REV: Not In VersionControl
LAYER NAME = Top Layer	TID #: TIDA-00847_AC_DC		
PLOT NAME = Top Layer	GENERATED : 3/3/2017 12:57:23 PM	TEXAS INSTRUMENTS	



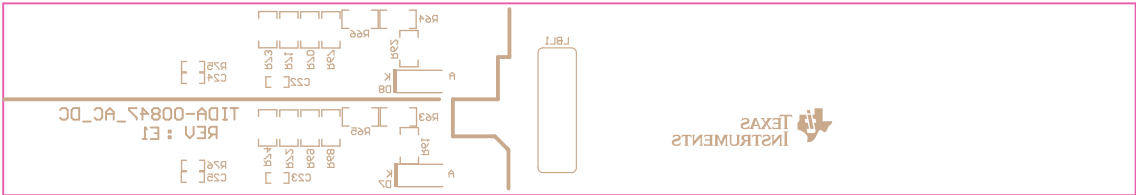
ALL ARTWORK VIEWED FROM TOP SIDE	BOARD #: TIDA-00847_AC_DC	REV: E1	SUN REV: Not In VersionControl
LAYER NAME = Bottom Layer	TID #: TIDA-00847_AC_DC		
PLOT NAME = Bottom Layer	GENERATED : 3/3/2017 12:57:24 PM	TEXAS INSTRUMENTS	



ALL ARTWORK VIEWED FROM TOP SIDE	BOARD #: TIDA-00847_AC_DC	REV: E1	SUN REV: Not In VersionControl
LAYER NAME = Bottom Paste	TID #: TIDA-00847_AC_DC		
PLOT NAME = Bottom Paste	GENERATED : 3/3/2017 12:57:24 PM	TEXAS INSTRUMENTS	

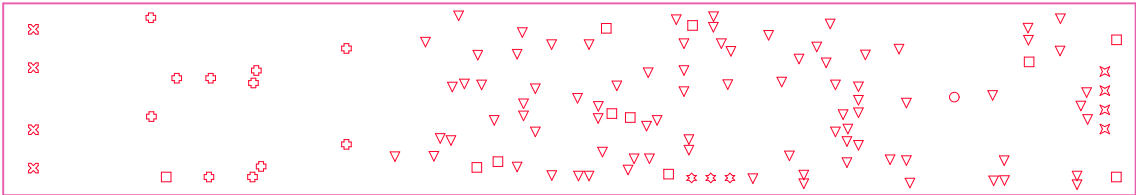


ALL ARTWORK VIEWED FROM TOP SIDE	BOARD #: TIDA-00847_AC_DC	REV: E1	SUN REV: Not In VersionControl
LAYER NAME = Bottom Solder	TID #: TIDA-00847_AC_DC		
PLOT NAME = Bottom Solder Mask	GENERATED : 3/3/2017 12:57:25 PM	TEXAS INSTRUMENTS	



ALL ARTWORK VIEWED FROM TOP SIDE	BOARD #: TIDA-00847_AC_DC	REV: E1	SUN REV: Not In VersionControl
LAYER NAME = Bottom Overlay	TID #: TIDA-00847_AC_DC		
PLOT NAME = Bottom Overlay	GENERATED : 3/3/2017 12:57:26 PM	TEXAS INSTRUMENTS	





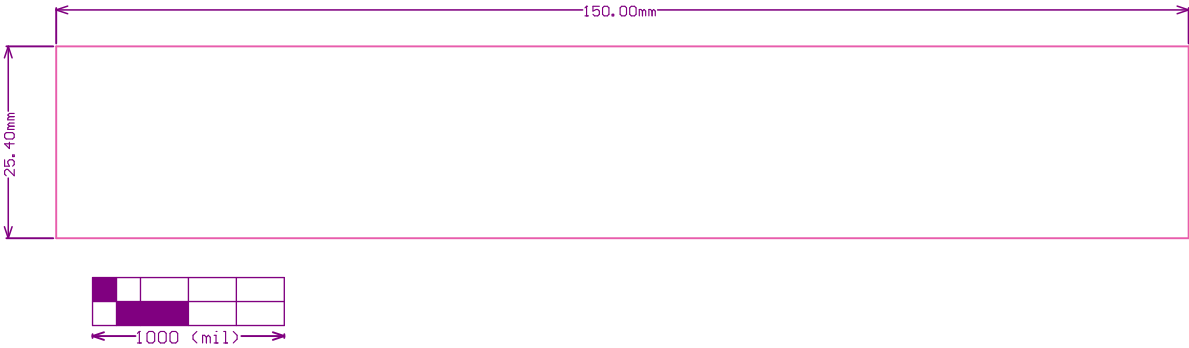
Drill Table

Symbol	Quantity	Finished Hole Size	Plated	Hole Type	Drill Layer Pair	Hole Length
▽	84	16.00mil (0.406mm)	PTH	Round	Top Layer - Bottom Layer	-
☆	11	20.00mil (0.508mm)	PTH	Round	Top Layer - Bottom Layer	-
⊠	3	33.46mil (0.850mm)	PTH	Round	Top Layer - Bottom Layer	-
⊠	11	40.00mil (1.016mm)	PTH	Round	Top Layer - Bottom Layer	-
⊠⊠	4	45.28mil (1.150mm)	PTH	Round	Top Layer - Bottom Layer	-
⊠⊠	4	49.37mil (1.254mm)	PTH	Round	Top Layer - Bottom Layer	-
○	1	40.00mil (1.016mm)	NPTH	Slot	Top Layer - Bottom Layer	900.00mil (22.860mm)
118 Total						

Slot definitions : Routed Path Length = Calculated from tool start centre position to tool end centre position.  
Hole Length = Routed Path Length + Tool Size = Slot length as defined in the PCB layout

FOR 16MIL DRILL +0/-16MIL  
FOR 20MIL DRILL +0/-20MIL  
FOR PTH DRILL +/-3MIL  
FOR NPTH DRILL +/-2MIL

ALL ARTWORK VIEWED FROM TOP SIDE	BOARD #: TIDA-00847_AC_DC	REV: E1	SUN REV: Not In VersionControl
LAYER NAME = Drill Drawing	TID #: TIDA-00847_AC_DC		
PLOT NAME = Drill Drawing	GENERATED : 3/3/2017 12:57:27 PM	TEXAS INSTRUMENTS	



ALL ARTWORK VIEWED FROM TOP SIDE	BOARD #: TIDA-00847_AC_DC	REV: E1	SUN REV: Not In VersionControl
LAYER NAME = M1 Board Outline	TID #: TIDA-00847_AC_DC		
PLOT NAME = Board Dimensions	GENERATED : 3/3/2017 12:57:27 PM		TEXAS INSTRUMENTS